

# EDCON Publishing Group

*K-12 Educational Materials 2004*



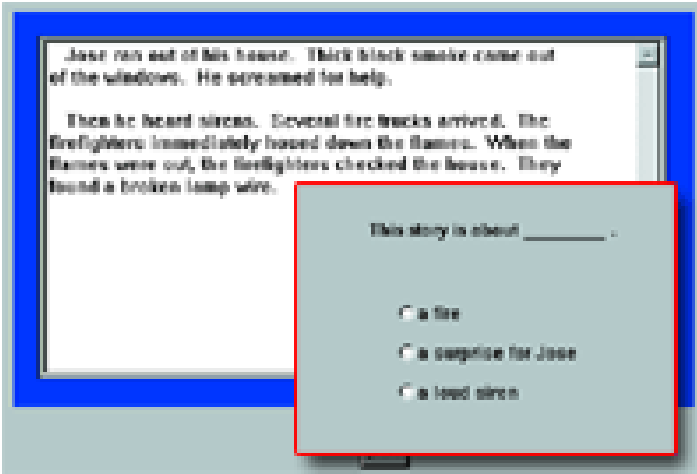
**EDCON**   
Publishing Group

 **IMPERIAL  
INTERNATIONAL**



# Diagnostic Reading Assessment

This informational Reading Inventory will help you determine your student's word recognition skills, comprehension strategies, rates of comprehension, and general reading behavior. The Test provide word lists, oral and silent reading selections, and comprehension questions for reading levels 2-11. Based on the Fry Readability Formula.

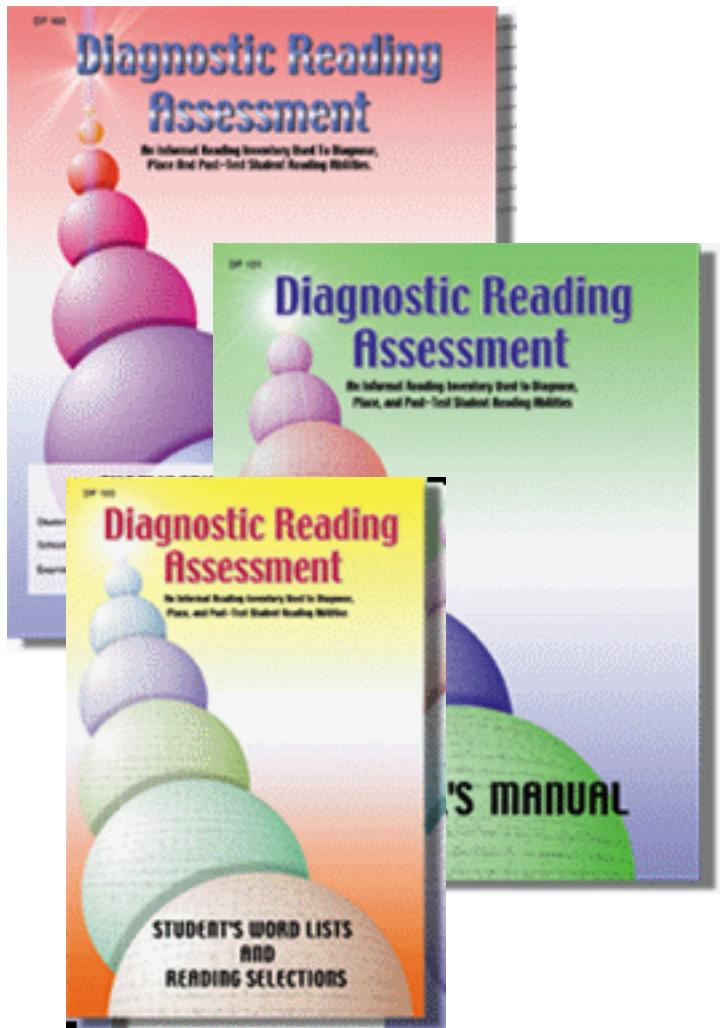


## Reading Comprehension Placement

*A great tool to quickly determine reading levels!*

A fast and effective way to determine reading placement levels from pre-readiness to 12-plus and to discover instructional, independent and frustration levels. This program is perfect for developmental, remedial and education programs. Students work through word comprehension questions (including analogies and definitions) and reading passage comprehension questions. Readability formulas used include Spache, Fry and Dale Chall.

- E-28070GA One Computer \$59.95
- E-28070LG 5 Lab Set \$179.95
- E-28070SG Net/Site License \$299.75



- EDDPT100 Examiner's Manual, Examiner's Record Booklet, Student Word Lists, Reading Selections, and Summary Pad \$49.00
- EDDPT102 Record Booklet (1 per student) \$6.95
- EDDPT10210 Class Pack (10 Record Booklets) \$66.00

# Basic Skills Cassette Programs



## Formula I Math Powerpacs

Levels 2-6 - Remedial Ages: 12 to Adult  
Formula I Math Powerpacs will lead, not push each student through the acquisition of strong fundamental math skills. The cassette narration provides a step-by-step self-directing, self-correcting approach to successful completion of the corresponding activity sheets. Each unit below includes (6) cassettes, (24) blackline masters, a teacher's guide complete with answer keys, in a sturdy vinyl binder.

ED2031	Powerpac A - 4 Basic Ops.	\$ 99.00
ED2032	Powerpac B - Place Value	\$ 99.00
ED2033	Powerpac C - Add/Sub, Frac	\$ 99.00
ED2034	Powerpac D - Mult/Div Frac	\$ 99.00
ED2035	Powerpac E - Frac/Dec, Wd	\$ 99.00
ED2036	Powerpac F - Wd Probs/Geo	\$ 99.00
ED2030	All Six Powerpacs Above	\$565.00



## Sports Math

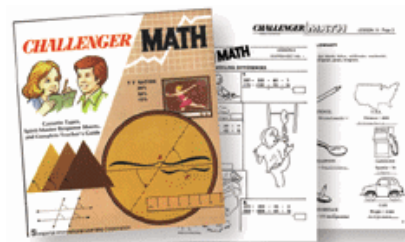
Levels 2-6 - Remedial Ages: 12 to Adult  
Propel your remedial math students into the exciting world of sports...i.e., baseball, basketball, track, football, tennis, golf, hockey, and swimming, while they use the four (4) basic math operations (addition, subtraction, multiplication, division) systematically developing each in small sequential steps which are self-directing and self-correcting. Program includes (6) cassettes, (18) blackline masters, a teacher's guide complete with answer keys and enrichment activities, in a sturdy vinyl binder.

ED211CA	Sports Math Cassettes	\$ 99.00
ED211CD	Sports Math CD-Roms	\$ 99.00

## Math Plus

Levels 2-8 - Remedial Ages: 12 to Adult  
Add the extra "plus" to your students use of mathematics while building computational skills, learning new math terms, and exploring scientific concepts. Math Plus presents the following concepts: the personal computer, binary number system, measuring sound and light waves, the concept of infinity, right angles, parallel lines, ratio and proportions, positive and negative numbers, subtraction, multiplication, and division. Unit includes (6) cassettes, (36) blackline masters, teacher's guide complete with answer keys, in a sturdy vinyl binder.

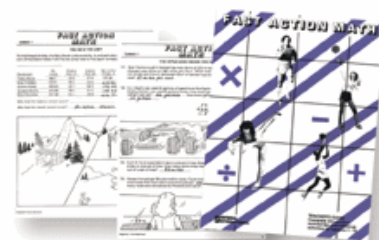
ED205	Math Plus	\$ 99.00
-------	-----------	----------



## Challenger Math

Levels 2-8 - Remedial Ages 12 to Adult  
Challenge your math students to a new experience in mathematics. Challenger Math brings concepts and terms into true-life settings. Skills developed in this program are measures of length, computing interest, averaging, large numbers, permutations, probability, circles, percentage, triangles, metric prefixes, geometric figures, and computing and charting in the stock market. Prerequisite: accurate skills in addition, subtraction, multiplication, and division. Unit includes (6) cassettes, (36) blackline masters, teacher's guide complete with answer keys, in a sturdy vinyl binder.

ED210	Challenger Math	\$ 99.00
-------	-----------------	----------



## Fast Action Math

Levels 2-8 - Remedial Ages: 12 to Adult  
"Get into the action" as highly motivating sports announcers and professional sound effects bring to life math word problems relevant to our everyday needs using the following sports: speed car racing, bowling, basketball, football, ice hockey, skiing, gymnastics, track and swimming. The object of this program is to increase each student's ability to recognize essential elements of information in math word problems thereby building a strong foundation in addition, subtraction, multiplication, division, and mixed operational word problems using division and multiplication of decimals. Program includes: (6) cassettes, (18) blackline masters, a teacher's guide complete with answer keys, in a sturdy vinyl binder.

ED206	Fast Action Math	\$ 99.00
-------	------------------	----------



# Ordering Information

**All Orders Should be Addressed to:  
Caswell & Caswell  
3571 Newgate  
Troy, MI 48084**

**WHEN ORDERING BY PHONE** please let us know if a confirming purchase order will be sent. This will help us avoid possible problems with duplicate orders.

**To Order Toll Free Call: 1-800-757-7668**

**To Order by Fax 1-248-646-4359**

**METHOD OF SHIPMENT** will be United Postal Service unless special request is made by the customer or we see a need to ship via another service.

**SHIPPING AND HANDLING CHARGES** are typically 10% of the total order. There is a \$4.50 minimum charge. Residential customers have a minimum charge of \$5.25

**ORDERS FROM INDIVIDUALS** should be prepaid. Be sure to include state sales tax.

**ALL CHECKS OR MONEY ORDERS MADE PAYABLE TO:  
CASWELL & CASWELL**

**ORDERS FROM EDUCATIONAL INSTITUTIONS** should include a purchase order number when possible and must be on either official stationary or an official purchase order form.

**CLASSROOM DISCOUNTS ARE AVAILABLE.  
PLEASE CALL FOR INFORMATION.**

**EXAMINE ALL MATERIALS AS SOON AS RECEIVED!** Notify us of damaged or missing items immediately.

**ALL RETURNS MUST BE AUTHORIZED BY CASWELL & CASWELL.** Permission to return should be requested and authorized in writing. We will not issue credit on unauthorized returns. All returned material must be in perfect, unmarked, saleable condition.

**ALL PRICES IN THIS CATALOG** are subject to change because of possible producer price changes. We bill at the producer's latest selling price. In case of a sizable increase in price, we will notify prior to shipment for confirmation.

